

# 90

PLT-90

# iperLOTUS

TOP PIANO DI LAVORO  
WORKTOP  
ARBEITSPLATTE  
PLAN DE TRAVAIL  
SOBRE DE TRABAJO

## Descrizione

**Costruzione** - Modello realizzato interamente in acciaio inox CrNi 18/10 AISI 304, con piano di spessore 2 mm, satinatura superficiale Scotch-Brite, particolari cromati, profili arrotondati. Piani dotati di alzatina posteriore.

**Modello** - Top piano di lavoro con o senza cassetto, per uso professionale.

**Dotazioni** - Bacinelle inox o in plastica, h 15 cm. Piedini regolabili in altezza.



PLT-90

## Description

**Construction** - Fabricated using CrNi 18/10 AISI 304 grade Stainless Steel Scotch-Brite Satin polish Finish, incorporating 2mm thick worktop, rounded edges, chromed details and rear splash back.

**Model** - Professional worktop with or without drawer.

**Fittings** - Appliance is supplied with steel or plastic tanks, h 15cm. Adjustable feet.

## Bezeichnung

**Aufbau** - Modell vollkommen aus Edelstahl CrNi 18/10 AISI 304 hergestellt, Deckplatte mit einer Stärke von 2 mm, Satinierung der Oberfläche Scotch-Brite, Einzelteile verchromt, abgerundete Profile. Einschübe ausgestattet mit hinterer Aufkantung.

**Modell** - Arbeitsplatte mit oder ohne Schublade, für den professionellen Gebrauch. **Ausstattungen** - Behälter aus Edelstahl oder Kunststoff, h 15 cm. Höhenverstellbare Füße.

## Description

**Construction** - Modèle réalisé entièrement en acier inox CrNi 18/10 AISI 304, avec plan de 2 mm d'épaisseur, satinage superficiel Scotch-Brite, détails chromés, profilés arrondis. Plans équipés de rehausseur postérieur.

**Modèle** - Plan de travail avec ou sans tiroir, à usage professionnel.

**Équipements** - Petits bacs en inox ou plastique, h 15 cm. Pieds réglables en hauteur.

## Descripción

**Construcción** - Modelo realizado completamente en acero inox CrNi 18/10 AISI 304, con plano de 2 mm de grosor, satinado superficial Scotch-Brite, detalles cromados y perfiles redondeados. Plano dotado de alzado posterior.

**Modelo** - Sobre de trabajo con o sin cajón, para uso profesional.

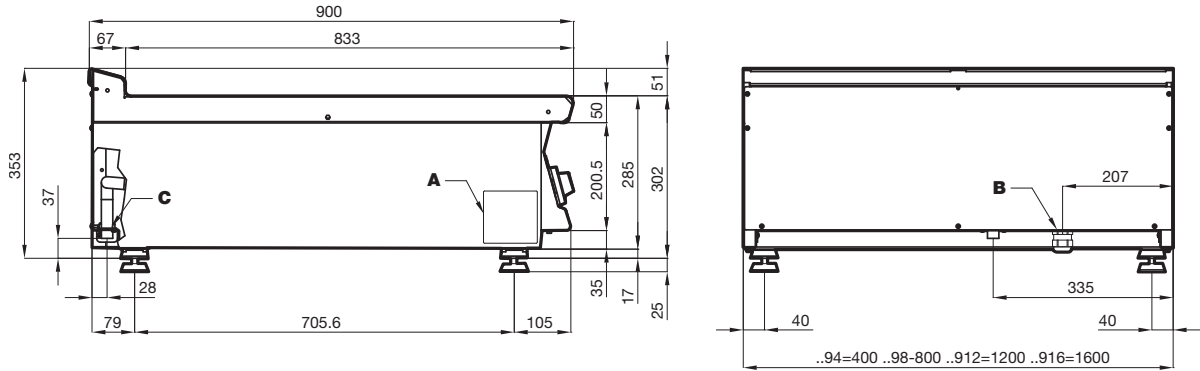
**Dotaciones** - Cubetas inox o de plástico, h 15 cm. Patas regulables en altura.

# 90

# iperlotus

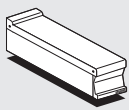
TOP PIANO DI LAVORO  
WORKTOP  
ARBEITSPLATTE  
PLAN DE TRAVAIL  
SOPRE DE TRABAIO

## PLT-90

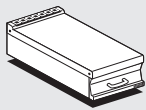


DATI TECNICI / TECHNICAL DATA / TECHNISCHE DATEN  
DONNEES TECHNIQUES / DATOS TECNICOS

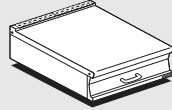
**A** Targhetta caratteristica / Data plate / Typenschild  
Plaque des caractéristiques / Chapa de características



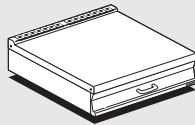
**PLT-92**



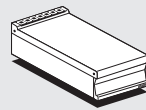
**PLT-94**



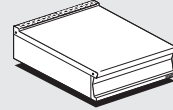
**PLT-96**



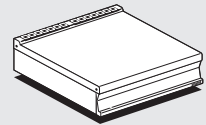
**PLT-98**



**PLST-94**



**PLST-96**



**PLST-98**

| Modelli<br>Models<br>Modele<br>Modelos<br>Modelos | Dimensioni<br>Dimensions<br>Abmessungen<br>Dimensions<br>Dimensiones | Bacinella in plastica<br>Plastic container<br>Kunststoffbehälter<br>Bac en plastique<br>Contenedor plástico | Bacinella inox<br>Stainless steel container<br>Behälter aus Nirosta<br>Bac en acier inox<br>Contenedor en acero inox. | Peso/Volume<br>Weight/Volume<br>Gewicht/Volumen<br>Poids/Volume<br>Peso/Volumen |
|---|--|---|---|---|
|   | cm   | N° * cm   | N° * cm   | kg/m <sup>3</sup>   |
| <b>PLT-92</b>                                     | 20x90x28h  |   |   | 18 / 0,120  |
| <b>PLT-94</b>                                     | 40x90x28h  | 1 * 6N 1/1 - 15h  |   | 28 / 0,180  |
| <b>PLT-96</b>                                     | 60x90x28h  |   | 1 * 49,5x50x15h   | 38 / 0,350  |
| <b>PLT-98</b>                                     | 80x90x28h  | 2 * 6N 1/1 - 15h  |   | 46 / 0,460  |
| <b>PLT-94</b>                                     | 40x90x28h  |   |   | 23 / 0,180  |
| <b>PLT-96</b>                                     | 60x90x28h  |   |   | 29 / 0,350  |
| <b>PLT-98</b>                                     | 80x90x28h  |   |   | 35 / 0,460  |

BUY LOTUS  
BUY ITALY

La ditta si riserva di apportare modifiche senza preavviso  
The manufacturer reserves the right to modify the technical data and models without  
previous notice - Technische Änderungen vorbehalten - La Société se réserve le droit  
d'apporter tout modification sans préavis - La Empresa se reserva el derecho de  
introducir, sin preaviso, modificaciones en cualquier momento



ITALIAN CULINARY ART

**LOTUS SpA** - Via Calmaor, 46  
31020 Zoppé di S. Vendemiano (TV) - ITALY  
Tel. +39 0438 778020 / 778468  
Fax +39 0438 778277  
www.lotuscookers.it - lotus@lotuscookers.it